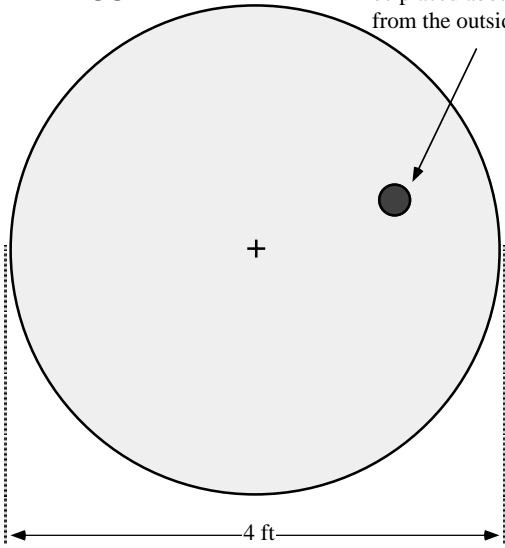


Hole for input of air from "shop vac".
Cut to match the outside diameter of
the end of the vacuum hose. Should
be placed about 1/3 of the distance
from the outside edge of the disk.

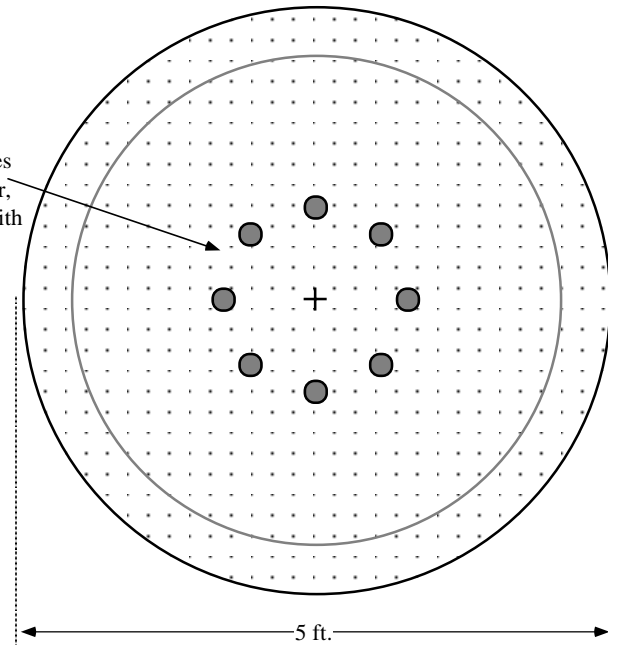
FIGURE 1



4 ft. diameter, 5/8 in. thick plywood disk

FIGURE 2

Cut eight circular holes
of about 1 in. diameter,
in a circular pattern with
a radius of about 9 in.



5 ft. diameter, 6 mil thick plastic sheeting

FIGURE 3

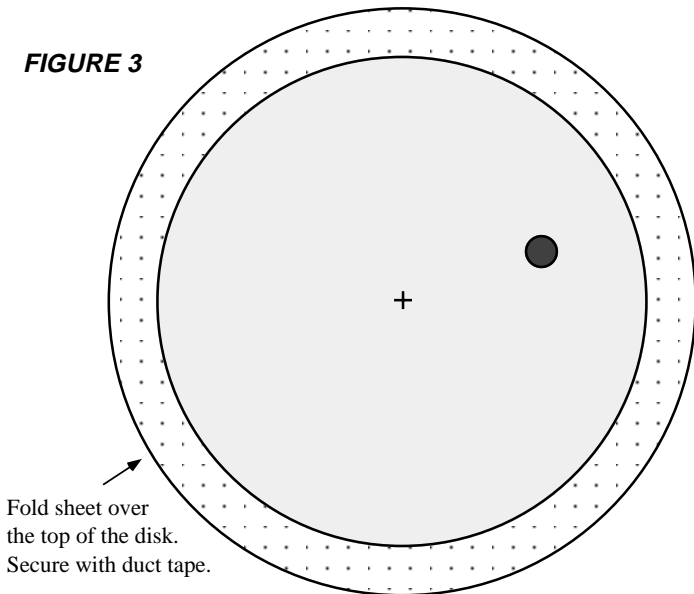
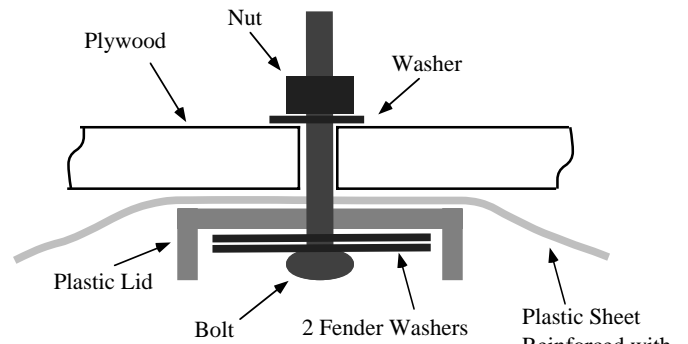
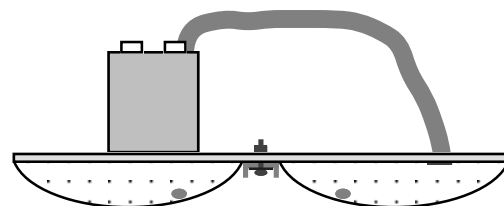


FIGURE 4



Secure the reinforced plastic as
shown using two 2 in. diameter
fender washers and a plastic lid.

FIGURE 5



Side cutaway view of hover craft with shop
vac on. The plastic bulges as shown.

Center the plywood disk on the plastic sheet after all
holes have been cut. Bolt the center of the plastic sheet
to the center of the disk using the lid and washers.
Reinforce the center of the plastic sheet with duct tape
in a circle of about 12" diameter. Stretch the plastic so
that it is flat and fold the edge of the plastic sheet
around the edge of the disk. Duct tape the plastic sheet
to the disk sealing any possible air leaks.